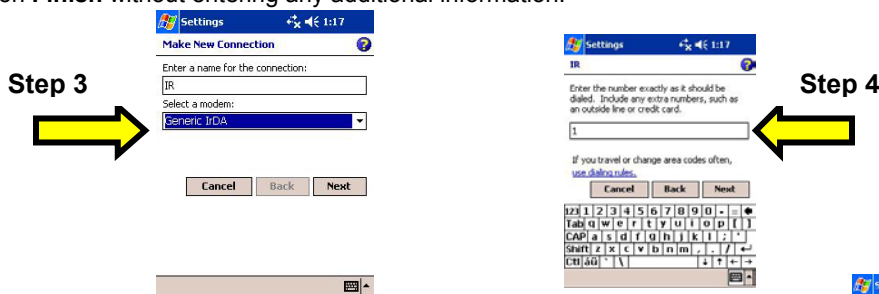


Using the Infrared (IR) Port—Web Programs Pocket PC 2003

Pocket PC 2003 handhelds that have already been locally synchronized to a partner computer can use the Sync station in the library.

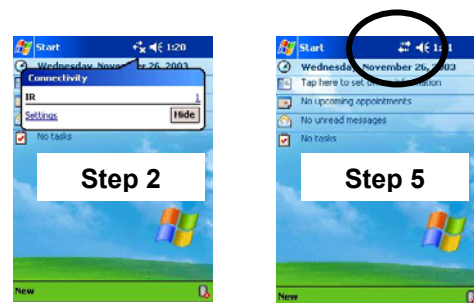
Essential First Steps—Setup

1. Go to **Start→Settings**, click on **Connection** tab and then click on **Connections** icon.
2. On the following screen, click on **Add a new modem connection** under My ISP.
3. Select “**Generic IrDA**” on the modem drop-down box and provide a name for this connection. Click on **Next** when completed.
4. Enter any number in the number to dial and click on **Next**.
5. Click on **Finish** without entering any additional information.



How to connect to the Internet via Clarinet on PocketPC 2003

1. Point the Pocket PC's IR port towards the Clarinet device.
2. Click on the left-and-right arrow with X mark on top of screen and a **Connectivity** window will display as shown. Click on the number hyperlink on the right to start connecting.
3. A login menu will display; click on **OK** without entering any data.
4. A dialing screen will appear.
5. Once the connection has been made, the window will disappear along with the X mark on the left-and-right arrow.



Syncing with your networked computer

1. Establish a connection to the Internet (see above)
2. Press the ActiveSync icon

Updating Web-Based Programs

• ePocrates AutoUpdate

1. Establish a connection to the Internet (see above).
2. Tap **Start | Internet Explorer | ePocrates Connect**
3. Choose Sync All.

Verify the correct server settings

Server: **ePocrates Server**
 Server Address: **sync6.epocrates.com**
 Port: **80**

Enter your ePocrates **user name** and **password**

• AvantGo

1. Establish a connection to the Internet (see above).
2. Tap **Start | Internet Explorer | My AvantGo** icon. The My Channels page appears. Tap the **TOOLS** button.
3. Tap **Server Options | Sync All**.

Verify the correct server settings
 Server Address: **sync.avantgo.com**
 Port: **80**

Enter your AvantGo **user name** and **password**

